

## GENERAL NOTES

THIS DRAWING TO BE READ IN CONJUNCTION WITH ARCHITECT'S DRAWINGS, CONSULTANT ENGINEER'S DRAWINGS AND SPECIFICATIONS & LANDSCAPE ARCHITECT'S DRAWINGS

REFER TO ARCHITECT'S SITE PLAN PL002 and PL003 FOR NORTH ORIENTATION.

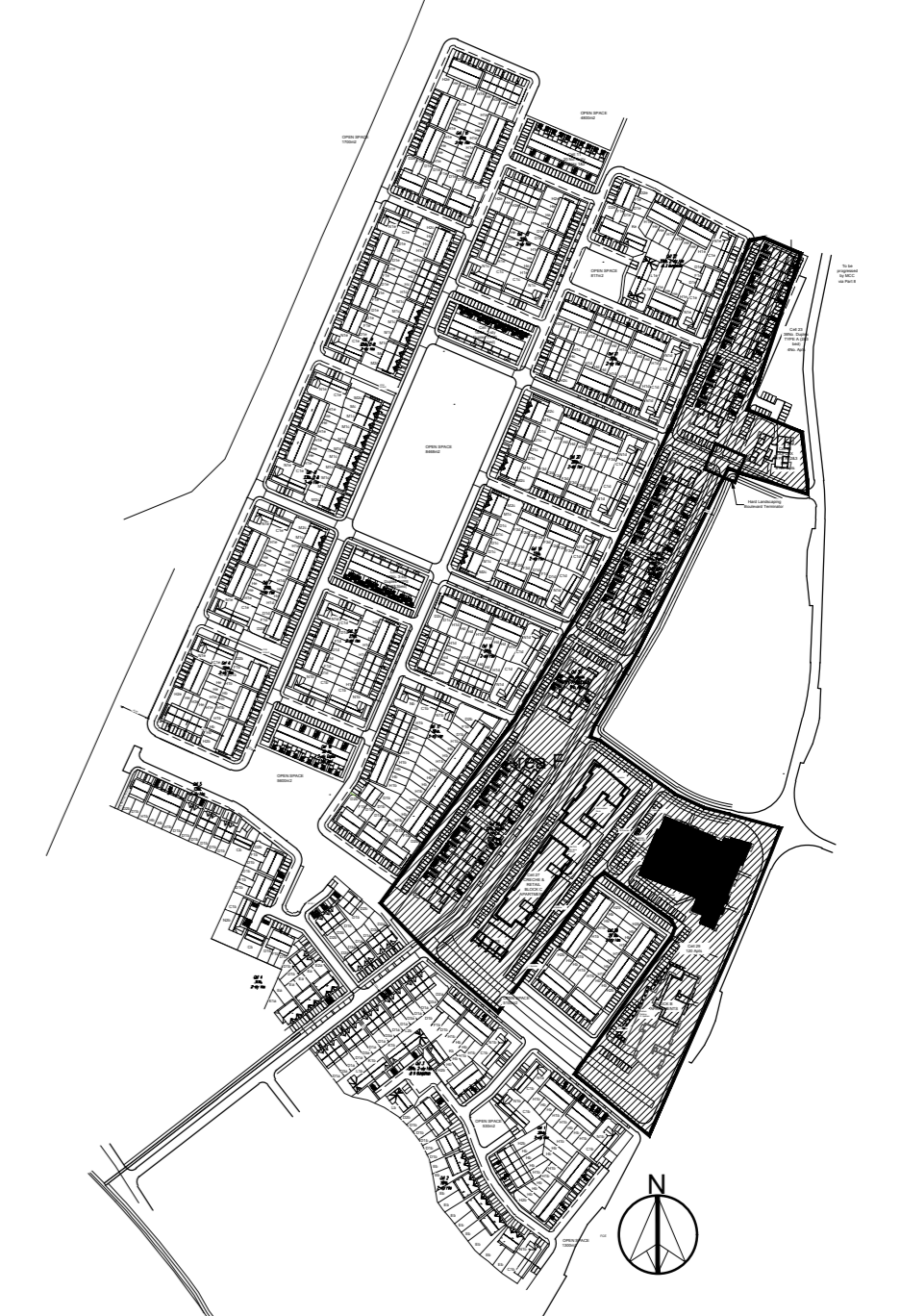
LEVELS GIVEN ON HOUSE TYPE DRAWINGS ARE GIVEN TO A LOCAL ABSOLUTE ZERO LEVEL. FOR SPECIFIC LEVELS DEPENDING ON INDIVIDUAL UNIT LOCATION; REFER TO ARCHITECT'S CONTEXT SECTIONS AND ENGINEER'S DRAWINGS WHERE LEVELS ARE ALL GIVEN IN RELATION TO LAND SURVEYOR'S BENCHMARK BASED ON MALIN HEAD DATUM LEVEL.

REFER TO SITE LAYOUT PLAN FOR NORTH ORIENTATION  
REFER TO CONSULTING ENGINEERS DRAWINGS FOR BLOCK LEVELS

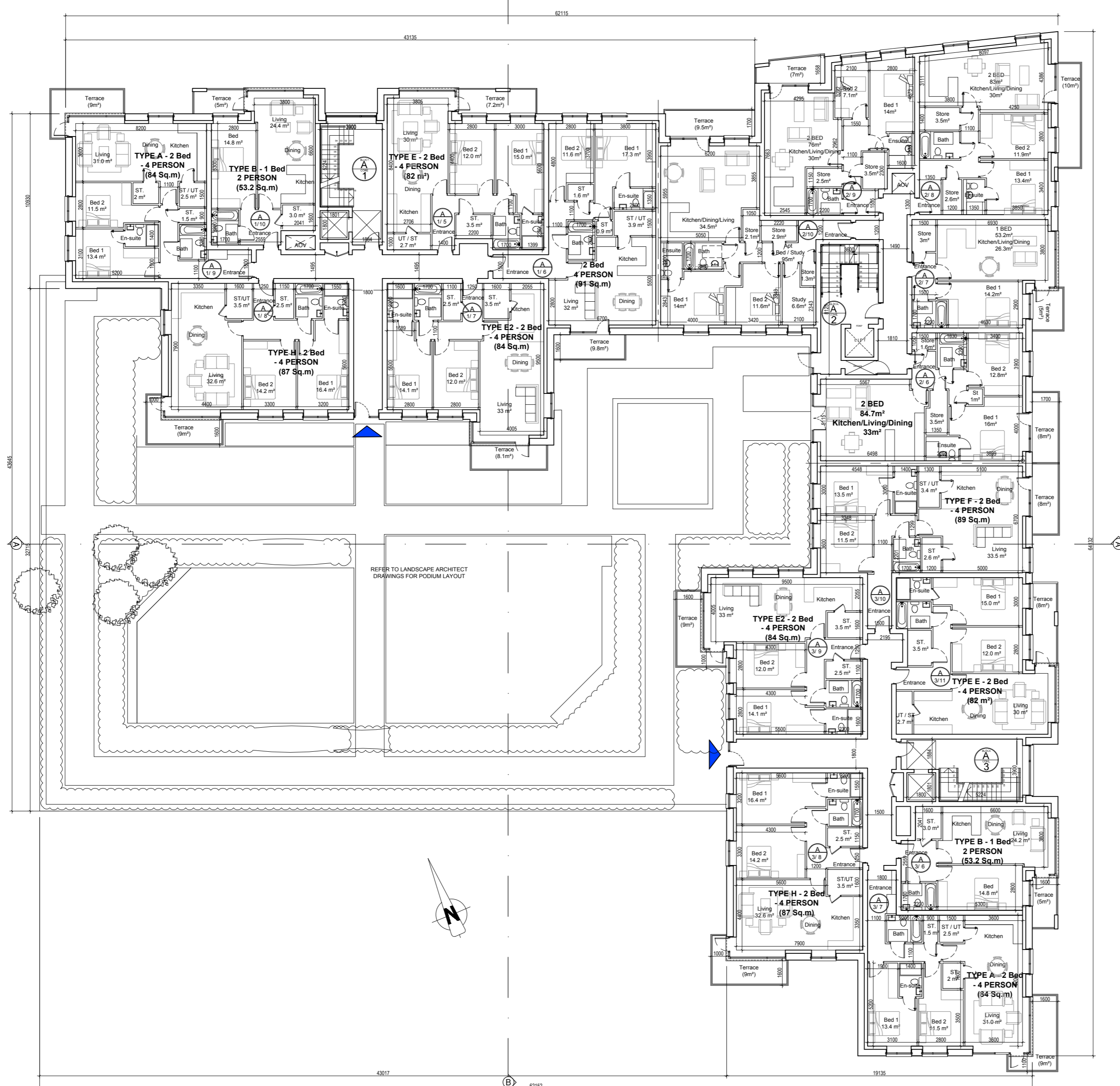
## NOTES ON FINISHES:

- FLAT ROOF: SINGLE PLY MEMBRANE & PRESSED METAL CAPPINGS & FLASHINGS.
- WALLS: SELECTED CLAY BRICKWORK WHERE INDICATED OTHERWISE PAINTED SAND / CEMENT RENDER OR SELF COLOURED RENDER OR DRY-DASH TO CONCEALED SIDE GABLES. NATURAL STONE CLADDING AS INDICATED.
- JOINERY: ALL WINDOWS AND DOORS, FRAMES AND LEAVES, TO BE ALUMINIUM POWDER-COATED TO APPROVED COLOUR OR UPVC OR PAINTED TIMBER TO APPROVED COLOUR. OBSCURE GLAZING WHERE INDICATED TO SENSITIVE WINDOWS, CURTAIN WALLING TO PENTHOUSE & FEATURE CORNERS
- RAINWATER GOODS: GUTTERS, DOWNPIPES, AND FIXINGS TO BE UPVC OR ALUMINIUM POWDER COATED TO SELECTED COLOUR TO MATCH ROOF SLATES
- \* SOLAR PANELS: INDICATIVE SOLAR PANEL POSITION; FINAL SOLAR PANEL POSITION DEPENDS ON HOUSE ORIENTATION. THE SOLAR PANELS SHOWN ARE A PROVISIONAL OPTION TO SATISFY RENEWABLE ENERGY REQUIREMENTS OF BUILDING REGS PART 1. SOLAR PANELS MAY BE OMITTED IN FAVOUR OF ALTERNATIVE RENEWABLE ENERGY SOURCE.

## KEY PLAN (N.T.S.)



GROUND FLOOR PLAN



FIRST FLOOR PLAN

## NOTES:

DO NOT SCALE FROM DRAWINGS. WORK TO FIGURED DIMENSIONS ONLY. ARCHITECT TO BE NOTIFIED OF ALL DISCREPANCIES.

## REVISIONS

DATE	DESCRIPTION	No.

MCORM

M<sup>C</sup>CROSSAN O'ROURKE MANNING ARCHITECTS

PROJECT TITLE:  
**Dunshaughlin East SHD**

DRAWING TITLE:  
**Proposed Apartment Block C29-A'  
Ground & First Floor Plans**

Albert Place West, Harcourt Lane, Dublin 2, Ireland.  
Tel: 01-4788700 Fax: 01-4788711 E-Mail: arch@mcorm.com

DATE: DEC'18

DRAWN BY: DE

SCALE: 1:200@A

REVISION:

JOB NO: 16028.1SHD301

DRAWING NO:

16028.1SHD301